

Product Description:

The NFPA 96 Standard for Ventilation Control and Fire Protection of Commercial Cooking Operations establishes minimal requirements for construction of hoods and ducts in commercial kitchen ventilation systems. NFPA 96 section 5.1.2 requires all penetrations of hood enclosures must be welded or sealed by listed devices that does not distract from the hood’s or duct’s structural integrity. The standard requires that all seams and joints must be sealed by a liquid-tight, continuous external weld or listed mechanical devices providing a liquid-tight seal. The Evergreen Quik-Seal® for hood penetration was an industry first, giving installers an approved method of replacing the expense and time consuming welding around the pipe at point of penetration of the hood. The fittings are manufactured of carbon steel with a nickel/chrome plate finish. The high-temperature gasket makes a liquid-tight seal between the fitting and hood or duct surface. The entire plated fitting is secured with a lock washer and nut.



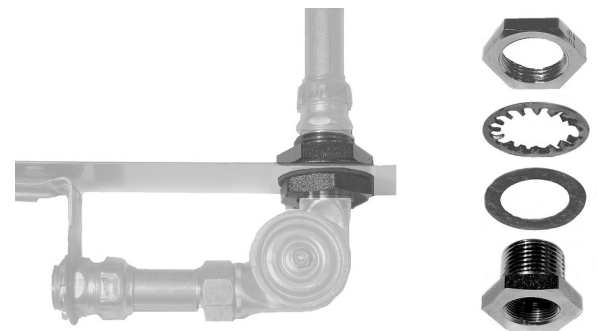
Benefits:

Designed to stop leakage of grease from inside the hood or duct to outside of the hood or duct at the hole created for the fire suppression system piping

Tested and listed with Underwriters Laboratories under the classification “Hood and Duct Accessories” and compatible with UL listed fire suppression systems

In conformance with the requirements of NFPA 17, 17A, 33 and 96 Standard for Ventilation Control and Fire Protection of Commercial Cooking Operations

Ideal for sealing around hose and pipe on vehicle fire suppression systems, gas station fire suppression and storage lockers



Options:

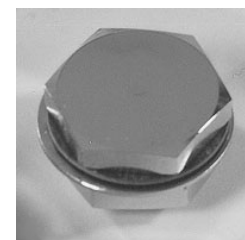
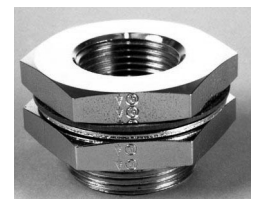
Evergreen Quik-Seal®: The Quik-Seal adapter is designed to stop leakage of grease from inside the hood or duct to outside the hood or duct at the hole created for the fire suppression system piping. The Quik-Seal accepts cut pipe of conduit with threaded ends.

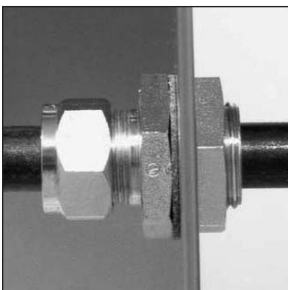
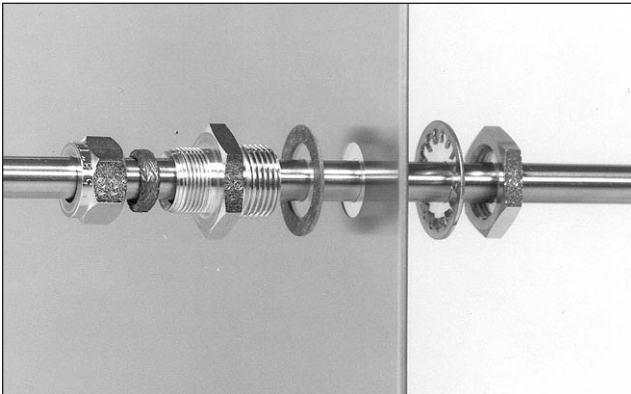
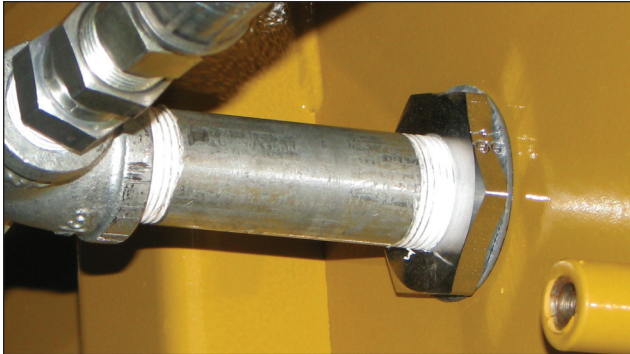
Evergreen Quik-Seal® for Corner Pulley: Specifically designed to handle the tough-to-get-to area between the kitchen fire suppression corner pulley and the ventilation hood.

Evergreen Compression Seal: Designed to give liquid-tight seal around the outside of tubing, pipe or EMT conduit thus eliminating cutting and threading of the pipe at the point of penetration, making installation easier and faster. The compression seal is tested to a differential pressure of over 100-psi from one side of the installed fitting to the other.

Evergreen Quik-Patch®: The Evergreen Quik-Patch gives a liquid-tight seal around an unwanted hole. With the Quik-Patch the unwanted holes are plugged with a safe and attractive fitting. The Quik-Patch is made of the same robust materials as the Quik-Seal and Compression Seal fittings.

Blind Fittings (NEW): The unique fitting design allows installation of seals from one side of the penetration when access to the backside is not convenient or possible (patent pending).





Evergreen Quik-Seal®	
Part No.	Size
218	1/4" pipe
170	3/8" pipe "A" 1-1/8" hole
899	3/8" pipe "B" 7/8" hole
171	1/2" pipe
172	3/4" pipe
213	1" pipe
265	1-1/4" pipe
268	1-1/2" pipe

Stainless seals are available for corrosive environments. We recommend using flat washers for gas station systems.

Evergreen Quik-Seal® for Corner Pulley	
Part No.	Size
430	7/8"-18 UNS x 1/2" NPT Thread
682	15/16"-20 UNS x 1/2" NPT Thread

Evergreen Quik-Patch®	
Part No.	Size
285	3/4" to 7/8" hole
916	7/8" to 1" hole
205	1-1/8" to 1-5/16" hole
689	1-3/8" to 9/16" hole
694	1-5/8" to 1-7/8" hole

Evergreen Compression Seal®	
Part No.	Size
881	1/4" tube
300	3/8" tube
301	1/2" tube & 1/4" pipe
302	5/8" tube & 3/8" pipe
303	1/2" EMT conduit
304	1/2" pipe
305	3/4" pipe
306	1" pipe

Evergreen Blind Compression Seal®	
Part No.	Size
1106	1/2" EMT conduit
1172	5/8" tube & 3/8" pipe
1185	1/4" tube